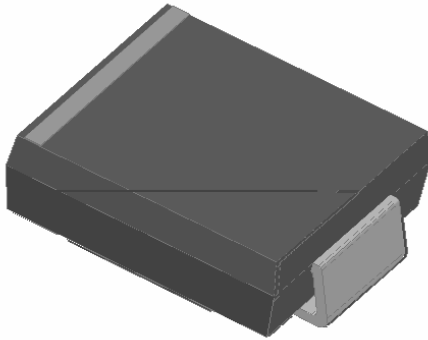
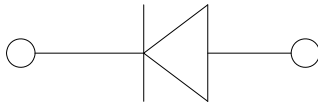


## Surface Mount Schottky Rectifier



### Features

- Guardring for overvoltage protection
- Low power losses
- Extremely fast switching
- High forward surge capability
- High frequency operation
- Meets MSL level 1, per J-STD-020, LF maximum peak  
: Tin plated leads, solderable per J-STD-002 and JESD22-B102



Surge (non-repetitive) forward current 4 * 0.1ms half-sine wave per cycle	$I_{FSM}$	A	120
Voltage rate of change (rated $V_R$ )	$dV/dt$	V/ $\mu$ s	10000
Storage temperature	$T_{stg}$	J	-55 ~ +175

### Electrical Characteristics $T_a=25$ Unless otherwise specified

PARAMETER	SYMBOL	TEST CONDITIONS	TYP	MAX	UNIT	
Instantaneous forward voltage	$V_F$	$I_F=5A$	$T_J=25$	0.82	0.9	V
			$T_J=125$	0.7	0.8	
Reverse current	$I_R$	Rated $V_R$	$T_J=25$	-	1	$\mu$ A
			$T_J=125$	-	150	
Typical junction capacitance	$C_J$	$V_R=4V, f=1MHz$	100	-	pF	



# SS515Q THRU SS520Q

**Thermal Characteristics**  $T_a=25$  Unless otherwise specified

PARAMETER	SYMBOL	UNIT	SS515Q	SS520Q
Thermal resistance	$R_{J-A(1)}$	/W	47 <sup>(1)</sup>	
	$R_{J-L(1)}$		13 <sup>(1)</sup>	

Note(1)

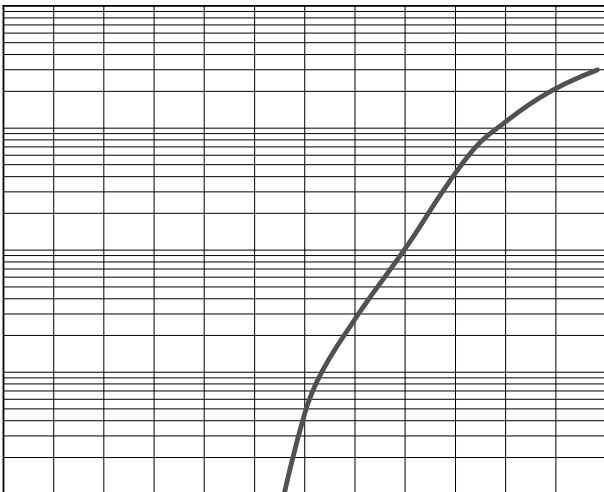
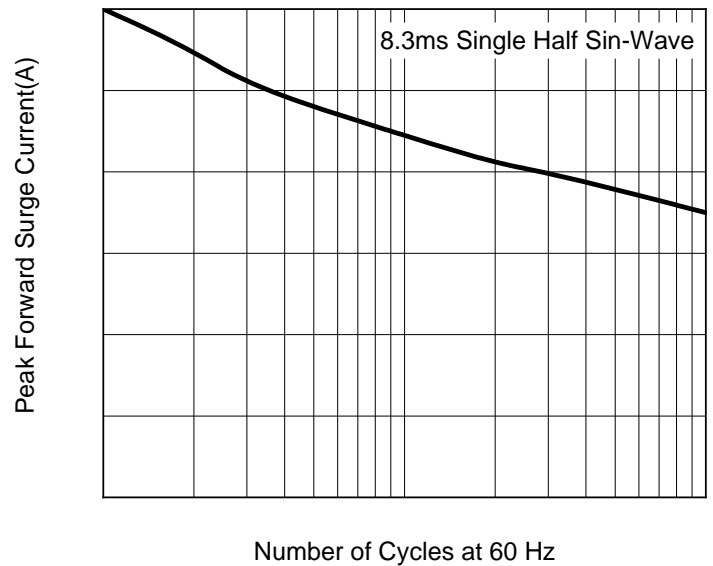
Thermal resistance from junction to ambient and from junction to lead mounted on P.C.B. with 0.6" x 0.6" (16 mm x 16 mm) copper pad areas

## Ordering Information (Example)

PREFERED P/N	PACKAGE CODE	UNIT WEIGHT(g)	MINIMUM PACKAGE(pcs)	OUTER CARTON QUANTITY(pcs)	DELIVERY MODE
SS515Q~SS520Q	F1	Approximate 0.251	3000	42000	13" reel

## Characteristics (Typical)

Fig.2:Maximum Non-Repetitive Peak Forward Surge Current





# SS515Q THRU SS520Q

## Outline Dimensions

DO-214AB (SMC)		
Dim	Min	Max
A	6.60	7.11
B	2.85	3.27
C	5.59	6.22
D	7.75	8.13
E	1.99	2.61
F	0.15	0.31
G	0.76	1.52
H	0.05	0.20

## Suggested pad layout

Dim	Typ
P1	9.9
P2	3.84
Q1	3.03
Q2	3.82

Æ





## SS515Q THRU SS520Q

---

### Disclaimer

The information presented in this document is for reference only. Yangzhou Yangjie Electronic Technology Co., Ltd. reserves the right to make changes without notice for the specification of the products displayed herein to improve reliability, function or design or otherwise.

The product listed herein is designed to be used with automotive electronics, are not designed for use in medical, lifesaving, lifesustaining, or military, Yangjie or anyone on its behalf, assumes no responsibility or liability for any damages resulting from such improper use of sale.

This publication supersedes & replaces all information previously supplied. For additional information, please visit our website [http:// www.21yangjie.com](http://www.21yangjie.com) , or consult your nearest Yangjie's sales office for further assistance.